

Topic: **Blocking access to drives to avoid deletions by Standard User:**

Last Change: June 2011

Introduction:

Within bigger networks of companies and institutions a lot of drive letters for many employees are created. Sometimes network drives on the server are mapped to a local drive letter. If the administrator doesn't want to allow the standard user to search on a special drive, it was in the past not possible to deny the access for *Dupehunter Professional*. Beginning with version 6.0.0.2901 administrators can individually distribute drive letters to *Dupehunter Professional* by settings a registry entry.

How to do:

This registry entry must be defined under **HKEY_LOCAL_MACHINE** to avoid standard user to edit this value. For example, we want to block the drive letter M: in *Dupehunter Professional*.

The following registry entry is necessary:

Key:

HKEY_LOCAL_MACHINE\Software\Carsten Heidtke Software\Dupehunter Professional

String:

ExcludeDrives

Value:

„m:“ (without quotation marks)

Or as a registry file:

REGEDIT4

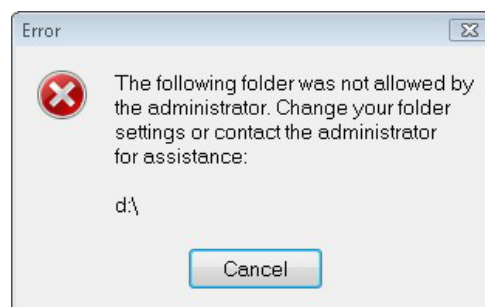
[HKEY_LOCAL_MACHINE\SOFTWARE\Carsten Heidtke Software\Dupehunter Professional]

"ExcludeDrives"="m:,z:,v:"

More than one drive is possible.

This entry was not created during the installation of *Dupehunter Professional*; you need to add this entry by hand. After the registry entry was made, on each search start the program compares the search directories defined in the job with the excluded drives of the registry. This works also for search jobs, which was defined BEFORE editing the registry.

If there was a collision the program generates an error message with the following content:



By clicking Cancel the search was terminated.

Administrative access:

The administrator can gain access by dial in with the administrator password and cleaning the registry entry for the time of maintenance.

Your cooperation will help us very much:

If you see this document or inadequacies in the program yet, please do tell us. We take every suggestion from you in order to achieve further improvements.

You can contact us at any time. Send a message to support@dupehunter.com.

Thank you for your patience and cooperation. We hope that this document has helped you.

Read a document by

Carsten Heidtke Software

Am Freibad 46
D-46499 Hamminkeln
Germany